



COMMERCIAL & INDUSTRIAL DISINFECTION SOLUTIONS

Models: LK5/6-A22, LK5/6-A42, LK5/6-A62



Applications Include:

Food & Beverage • Pharmaceutical • Swimming Pools
Water Reuse • Ultrapure • Recreational Water
Aquaculture • Municipal

Product Features

- Modular 304 stainless steel control panel with LCD display for remaining lamp life, total running hours, audible & visual lamp failure, remote-on and dry contacts
- 316L stainless steel, polished reactors with flanged end-plate
- Designed & manufactured to ASME pressure vessel standards
- Flow rates stated at 95% UVT at a dose of 30 mJ/cm²
- User friendly bayonet style lamp connectors (quick ¼ turn removal with no extra tools needed)
- True gland seal retaining nuts with positive stop
- Reliable, industry proven low pressure amalgam (LP-AM) coated UV lamps with ceramic bases for durability and a 12,000 hour lamp life
- Constant current electronic ballasts

LUMINOR's K2 line of disinfection systems are specifically designed and built to handle the challenging environments of process and manufacturing industries as well as pool and leisure applications.

Unsure about needing a UV sensor or if regulations require you to add a sensor? There is no need to replace the entire system.....simply add a UV sensor module to the K2 reactor as it comes with an integral sensor port built in! Plug the optional UV sensor into the pre-wired controller and the UV intensity will be displayed on the LCD output.

Constructed with highly polished 316L stainless steel reactors and stainless steel enclosures, K2 uses proven low pressure amalgam (LP-AM) lamp technology for maximum power density and efficiency in a small footprint.

Controlling microbiological (bacteria & virus) issues in water (or other viscous fluids), including *E.coli*, *Cryptosporidium* and *Giardia lamblia* is safe and simple with LUMINOR UV systems. UV does not affect the aesthetic quality of the fluid and the process does not add anything to the fluid, nor create any disinfection by-products.

Covering a wide variety of applications in both regulated and unregulated markets, K2 offers environmentally friendly disinfection at lower capital and operating costs than traditional disinfection solutions.

Available Systems

- LK5/6-A22** for flow rates of 650 lpm (175 gpm) (40 m3/hr)
- LK5/6-A42** for flow rates of 1500 lpm (400 gpm) (90 m3/hr)
- LK5/6-A62** for flow rates of 2400 lpm (625 gpm) (140 m3/hr)

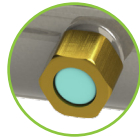
Control Features

- Individual lamp status indicators (visual & audible failure indicators)
- Lamp age monitor (visual & audible failure indicators)
- Lamp cycle counter (tracks total on-off lamp cycles)
- Service time monitor (tracks total system running time)
- Chamber temperature monitor (monitors high temperatures and no flow conditions)
- Panel temperature monitor (protects electronic circuits from extreme temperatures)
- Remote on/off feature (allows reactor to be controlled remotely and timed with other system components)
- Automatic reactor shut-down (user configurable)
- Dry contact outputs
 - Minor alarm (NO/NC)
 - Major alarm (NO/NC)
 - Reactor ready (valve control feature)(NO/NC)
- Major alarm output (audible & visual)
- Minor alarm output (audible & visual)

Optional Equipment Modules

UV Sensor Port - Included

All K2 reactors include integral UV sensor ports for future upgradeability. Simply remove the plug and affix the optional UV sensors!



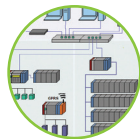
UV Sensor Module - Optional

Allows the 254nm UV wavelength to be measured and displayed via the K2 controller. The sensors plug directly into the controller and are mounted in the sensor ports located on all K2 reactors. Order RS-KUV.



Remote Monitoring (Dry Contacts) Output

Allows for the dry contact signal (on/off) provided by the K2 controller to be sent to a remote location. Can be used for remote on, solenoid connection, PLC connection, remote alarm, remote visual, or many other options.



K2 - Equipment Specifications

K2, Commercial / Industrial / Municipal UV Systems, Non-Monitored, Monitored			
Model	LK5/6-A22	LK5/6-A42	LK5/6-A62
Flow Rate (30mJ/cm ² * @ 95% UVT)	175 GPM	404 GPM	625 GPM
	662 lpm	1530 lpm	2366 lpm
	39.7 m ³ /hr	91.8 m ³ /hr	142 m ³ /hr
Flow Rate (16mJ/cm ² * @ 95% UVT)	327 GPM	758 GPM	1170 GPM
	1240 lpm	2870 lpm	4420 lpm
	74.3 m ³ /hr	172.2 m ³ /hr	265.7 m ³ /hr
Flow Rate (40mJ/cm ² * @ 95% UVT)	131 GPM	303 GPM	467 GPM
	496 lpm	1150 lpm	1770 lpm
	29.8 m ³ /hr	68.8 m ³ /hr	106 m ³ /hr
Port Size	3" Flange	4" Flange	6" Flange
Electrical	220V / 50-60Hz		
Electrical Connection	Direct Wire		
Lamp Watts	414	828	1242
Power (Watts)	460	900	1340
Chamber Material	316L Stainless Steel, A249 Pressure Rated Tubing, Polished & Passivated		
Replacement Lamp	RL-1000A (2 required)	RL-1000A (4 required)	RL-1000A (6 required)
Replacement Sleeve	RQ-K2 (2 required)	RQ-K2 (4 required)	RQ-K2 (6 required)
Reactor Dimensions	10.5 x 53.7 x 15.7" (27 x 136 x 40cm)	11 x 54.7 x 17.8" (28 x 139 x 45cm)	11 x 54.7 x 18" (28 x 139 x 46cm)
Controller Dimensions	19 x 16.5 x 8.3 (48 x 42 x 21cm)	23 x 16.5 x 8.3 (58 x 42 x 21cm)	27 x 24.5 x 10.3 (69 x 62 x 26cm)
Maximum Operating Pressure	10.3 bar (150 psi)		
Operating Temperature Range	2-40° C (36-104° F)		
254nm UV Intensity Monitor	Optional / Upgradeable (5.0), YES (6.0)		
UVT Monitoring	Optional / Upgradeable		
Dose Calculations	Optional / Upgradeable		
Flow Monitoring	Optional / Upgradeable		
Internal Fault History	YES		
Remote - On	YES		
Dry Contacts (Solenoid Ready)	YES		
4-20 mA Output	YES		
Drain Ports	YES, ½"		
Lamp Age Counter	YES		
Sample Ports	YES, ½"		
Visual Lamp-Out Indicator	YES		
Audible Lamp-Out Alarm	YES		
Shipping Weight	Contact Factory		

*Port sizes are based on flow rates for 30mJ/cm² or higher doses.

Flow rates for lower doses may not be achievable. Contact factory for custom port sizing.

NOTE: Electrical certification optional for various markets.

Manufacturer's Warranty

REACTORS - Ten (10) year Limited Warranty
ELECTRONICS - Three (3) year Limited Warranty
UV LAMPS - One (1) year Limited Warranty
QUARTZ SLEEVES - One (1) year Limited Warranty



See website for LUMINOR's complete warranty document including conditions and exclusions.

LUMINOR Environmental Inc.
 80 Southgate Drive, Unit 4
 Guelph, Ontario, CANADA
 N1G 4P5

www.watertiger.com
 (604) 630-1114



EPA Establishment
 #088776-CAN-001



Carbon
 Neutral

MEMBER



LuminorUV



LuminorUV